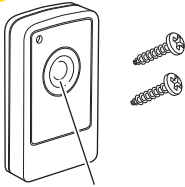


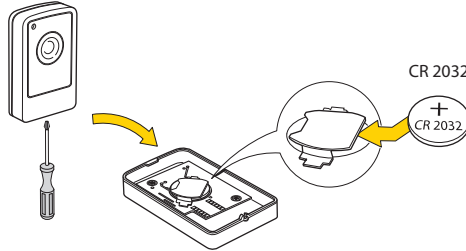
Yale®



Panic / Pair / Test button (1)

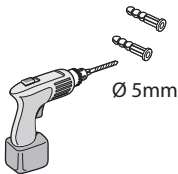
SR-PB

Insert battery (2)

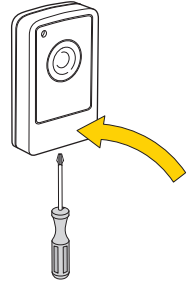
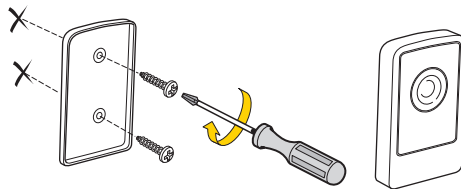


CR 2032

CR 2032



Ø 5mm



- 1) (IT) Associazione/test - (DE) Verbinden/Testen - (NO) Tilkobling/Test - (SE) Para/Testa - (DK) Tilslut/test
- 2) (IT) Inserire la batteria - (DE) Batterie einfügen - (NO) Sett inn batteriet - (SE) Sätt i batteriet - (DK) Indsæt batteri



(GB) Please see your Yale Smartphone Alarm System Instruction manual for the following: Adding this component to your Alarm, Installing, Changing the batteries, Troubleshooting.

(IT) Si prega di consultare il manuale istruzioni dell'allarme Yale Smartphone Alarm per le seguenti operazioni: Aggiungere questo componente al vostro allarme, Installazione, Sostituzione batterie, Risoluzione dei problemi.

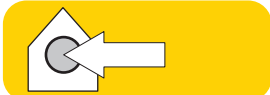
(DE) Bitte beachten Sie Ihren Yale Smartphone Alarm-System Bedienungsanleitung für folgende: Das Hinzufügen dieser Tür / Fenster-Detektor, um Ihren Alarm, Installieren, Batteriewechsel, Fehlersuche.

(NO) Vi refererer til den medfølgende brukermanualen av Yale Smartphone Alarm systemet for følgende informasjon: Legge til tilleggsutstyr, Montere enheter, Bytte batterier, Problemløsning.

(SE) För nedanstående hänvisas till Yale Smartphone Alarm system manualen: Lägg till en komponent till ditt larmsystem, Installation, Batteribyte, Felsökning.

(DK) Se hovedmanualen til Yale Smartphone Alarm System, som indeholder vejledning i flg.: tilføj komponenter, installation, batteriskift, fejlfinding.

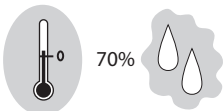
(GB) Environment - (IT) Ambiente - (DE) Umgebung - (NO) Miljø - (SE) Miljö - (DK) Miljø.



Housings ABS/polycarbonate

(IT) "Involucro di TUTTI i dispositivi ABS/polycarbonato"  
 (DE) Alle Geräte ,Gehäuse ABS Polycarbonat  
 (NO) ALLE komponenter. Deksel av ABS/polykarbonat  
 (SE) Alla komponenter Plasthölje ABS/Polycarbonat  
 (DK) "Alle komponenter ABS/polycarbonat"

-10°C to 40°C



RoHS

An ASSAABLOY Group brand

ASSA ABLOY

SR-PB-MI-v04

**Yale®**

(GB) How does it work - (IT) Come funziona - (DE) Wie es funktioniert -  
(NO) Hvordan virker det - (SE) Hur fungerar det - (DK) Hvordan virker det



Pair and  
test planned location  
for stable radio  
performance<sup>(1)</sup>

"beep"



>3sec.<



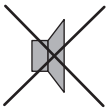
Radio 868MHz FM

(1) (IT) Associazione nuovo dispositivo. Esegui un test della posizione programmata dei componenti -  
(DE) Verbinden neuer Geräte. Testen Sie Ihren gewählten Standort - (NO) Tilkobling av ekstrautstyr.  
Test for stabile trådløse signaler - (SE) Para in nytt tillbehör. Test radiostyrka - (DK) Tilslut ekstraudstyr.  
Test for stabil trådløs forbindelse

**i**



>3sec.<



>10sec.<

